

Structured Light System Raw Bayer Pattern Image

[Oceans 3.0 API filter](#): dataProductCode=SLSRBPI

Revision History

1. : Initial Release

Description

The videos are a combination of the Wally Structure Light System camera Images. The Images are captured every second with various break times between sets of images. The videos breaks when there is a gap greater then one hour between images. If the video is shorter the 10 seconds it is not shown.

Formats

The data is available as a **RGGB-PNG** image. A RGGB image is a Bayer filter mosaic. that is has a filter pattern of 50% green, 25% red and 25% blue. These images have more information in the **PNG** then a **PNG** veiwer can not present. The image must be demosaiced to see the full resolution and colours of the images, this can be done easily in Matlab using the pseudocode below.

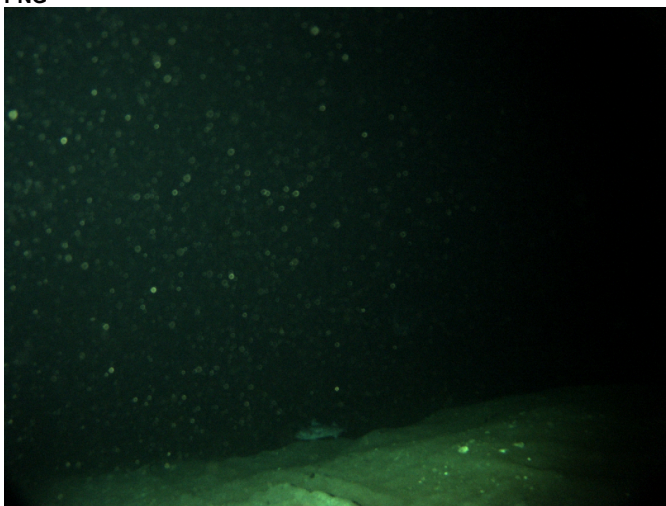
Video data in **MP4** format. Exact specifications of the video file (bitrate, encoding, etc), may vary. The videos have a frame rate of 12.5 frames per second.

Examples

- **RGGB-PNG**



- **PNG**



[Oceans 3.0 API filter](#): extension=png

Pseudocode

```
I = imread(fileName);  
J = demosaic(I,'rggb');  
imshow(J);
```

note to internal ONC users: The full code can be found in ONC devplayground.

Discussion

To comment on this product, click *Add Comment* below.