

48

Kongsberg Mesotech Rotary Sonar Data Product - *SWEEP Mode*

Data files for Kongsberg Mesotech Rotary Sonar instruments are described here. In the sweep mode, the sonar does a 360 degrees sweep of the nearby water and seabed. For *SCAN* mode, see this [page](#).

Oceans 2.0 API filter: `dataProductCode=KSWDP`

Revision History

- 20120519: Initial SMB product released
- 20121002: Scan Mode enabled
- 20140730: MAT-file and plotting products added

Formats

This data is available in **LOG**, **SMB** and **MAT** format (the **LOG** file is a internal ONC format). **LOG** files are created daily at midnight UTC from data acquired throughout the day. Shortly thereafter, the data products are processed from the **LOG** files and are made available to data search. Content descriptions are provided below.

Plots are available in **PNG** and **PDF** format.

SMB

This binary format is specific to the manufacturer. When using Kongsberg Mesotech data acquisition software, data is normally stored in this way. Although we use custom-built drivers to communicate with our instruments, we can use the raw data in the **log** file to produce the **SMB** file which can be interpreted by Kongsberg Mesotech MS 1000 post-processing software.

This format is further described in the manufacturer's documentation: [900-00007904-2.1.pdf](#). (Here's a more recent version: [Singlebeam_SMB_V0230.pdf](#), however, our SMB format is based on the older format specification.) The MATLAB library we use to produce **MAT** file and plots from **SMB** files is available upon request.

This data product has been tested mostly with MS 1000 version 4.51, while the new version, 5.2, also tests well. Historic data has been reprocessed and sweep **SMB** files should be fully available. If a data search returns with 'No data found' when the data availability shows that there is data, please [contact us](#) and we will be happy to investigate.

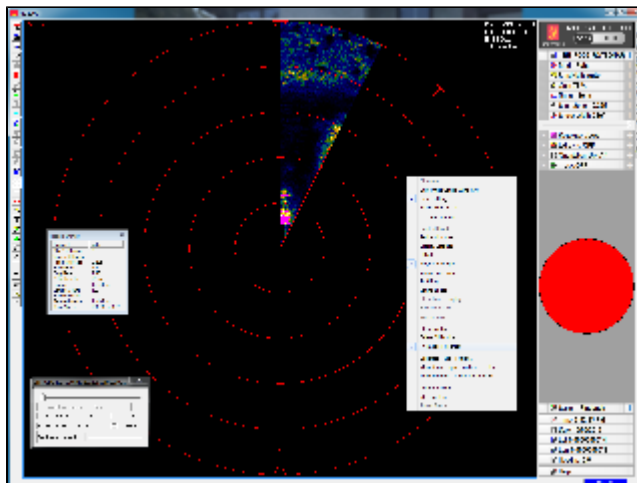
Oceans 2.0 API filter: `extension=smb`

Viewing SMB Files

The MS 1000 software (Kongsberg Mesotech, <http://www.kongsberg-mesotech.com>) is free to redistribute for playback of the data. Download the MS Windows version here: [MS1000_V0520_unlocked.zip](#). Then unzip and run MS1000_V0520_Setup.exe. To view the data, run the MS1000 software and press the play button. Alternatively, double-click an SMB file to launch the software in playback mode. The fast-forward function is useful for viewing the data quickly.

Previous versions of the MS1000 software did not directly support the high sample rate that our rotary sonars operate at. To make older versions work, right-click on the image and select 'Fit Image To Screen'. To avoid doing this every time, best to "Save Settings" when prompted while closing the software.

In some cases, the software does not update the image promptly. *Wiggle* your mouse and the display will update. (It appears to be a limitation of the software and graphical capability of one's computer, we're investigating.) The fast forward function of the software is very useful to view a large amount of data quickly.



MAT

MAT files (v7) can be opened using MathWorks MATLAB 7.0 or later. The file contains two structures: Meta and Data.

Meta: a structure array containing the following metadata fields:

- **deviceId:** A unique identifier to represent the instrument within the Ocean Networks Canada data management and archiving system.
- **creationDate:** Date and time (using ISO8601 format) that the data product was produced. This is a valuable indicator for comparing to other revisions of the same data product.
- **deviceName:** A name given to the instrument.
- **deviceCode:** A unique string for the instrument which is used to generate data product filenames.
- **deviceCategory:** Device category to list under data search ('Echosounder').
- **deviceCategoryCode:** Code representing the device category. Used for accessing webservices, as described here: [API / webservice documentation](#) (log in to see this link).
- **lat:** Fixed value obtained at time of deployment. Will be NaN if mobile or if both site latitude and device offset are null. If mobile, sensor information will be available in `mobilePositionSensor` structure..
- **lon:** Fixed value obtained at time of deployment. Will be NaN if mobile or if both site longitude and device offset are null. If mobile, sensor information will be available in `mobilePositionSensor` structure.
- **depth:** Fixed value obtained at time of deployment. Will be NaN if mobile or if both site depth and device offset are null. If mobile, sensor information will be available in `mobilePositionSensor` structure.
- **deviceHeading:** Fixed value obtained at time of deployment. Will be NaN if mobile or if both site heading and device offset are null. If mobile, sensor information will be available in `mobilePositionSensor` structure.
- **devicePitch:** Fixed value obtained at time of deployment. Will be NaN if mobile or if both site pitch and device offset are null. If mobile, sensor information will be available in `mobilePositionSensor` structure.
- **deviceRoll:** Fixed value obtained at time of deployment. Will be NaN if mobile or if both site roll and device offset are null. If mobile, sensor information will be available in `mobilePositionSensor` structure.
- **siteName:** Name corresponding to its latitude, longitude, depth position.
- **stationCode:** Code representing the station or site. Used for accessing webservices, as described here: [API / webservice documentation](#) (log in to see this link).
- **locationName:** The node of the Ocean Networks Canada observatory. Each location contains many sites.
- **dataQualityComments:** In some cases, there are particular quality-related issues that are mentioned here. This is distinct from QAQC information contained in the data structure.
- **MobilePositionSensor.name:** A cell array of sensor names for mobile position sensors. If not a mobile device, this will be an empty cell string.
- **MobilePositionSensor.sensorID:** An array of unique identifiers of sensors that provide position data for mobile devices - this data may be used in this data product.
- **MobilePositionSensor.deviceID:** An array of unique identifiers of sensors that provide position data for mobile devices - this data may be used in this data product.
- **MobilePositionSensor.dateFrom:** An array of datenums denoting the range of applicability of each mobile position sensor - this data may be used in this data product.
- **MobilePositionSensor.dateTo:** An array of datenums denoting the range of applicability of each mobile position sensor - this data may be used in this data product.
- **MobilePositionSensor.typeName:** A cell array of sensor names for mobile position sensors. If not a mobile device, this will be an empty cell string. One of: Latitude, Longitude, Depth, COMPASS_SENSOR, Pitch, Roll.
- **MobilePositionSensor.offset:** An array of offsets between the mobile position sensors' values and the position of the device (for instance, if cabled profiler has a depth sensor that is 1.2 m above the device, the offset will be -1.2m).
- **MobilePositionSensor.sensorTypeID:** An array of unique identifiers for the sensor type.
- **MobilePositionSensor.correctedSensorID:** An array of unique identifiers of sensors that provide corrected mobile positioning data. This is generally used for profiling deployments where the latency is corrected for: CTD casts primarily.
- **deploymentDateFrom:** The date of the deployment on which the data was acquired.
- **deploymentDateTo:** The date of the end of the deployment on which the data was acquired (may be omitted if still deployed).
- **samplingPeriod:** Sampling rate of the instrument in seconds (maybe omitted on some devices that have no scalar sensors).
- **samplingPeriodDateFrom:** matlab datenum of the start of the corresponding sample period (maybe omitted on some devices that have no scalar sensors).
- **samplingPeriodDateTo:** matlab datenum of the end of the corresponding sample period (maybe omitted on some devices that have no scalar sensors).
- **searchID:** unique number tracking this search request (not normally included).
- **Attribution:** A structure array with Attribution information, ordered by importance and date. For internal users, go to the [Network Console](#) to configure the attributions. If an organization has more than one role it will be collated. If there are gaps in the date ranges, they are filled in with the default Ocean Networks Canada citation. If the "Attribution Required?" field is set to "No" on the [Network Console](#) then the citation will not appear. For data products with a attribution (except MAT files) and for users making products from a MAT file, if the special attribution is blank /null, then the company default attribution will be used and if it is also blank/null, then the final attribution will consist of the organization name and role: "Ocean Networks Canada (Owner, Collaborator)". Here are the fields:
 - **acknowledgement:** the acknowledgement text, note that if the special acknowledgement blank/null, the default acknowledgement is used.
 - **startDate:** datenum format
 - **endDate:** datenum format
 - **organizationName**
 - **organizationRole**

| Field | Value | Size | Class | Min | Max | Mean |
|----------------------|--|------|--------|------------|------------|------------|
| deviceID | 23939 | 1x1 | double | 23939 | 23939 | 23939 |
| creationDate | '20180730T183813Z in QA' | 1x22 | char | | | |
| deviceName | 'JASCO M36-V35-100 Hydrophone B000904' | 1x36 | char | | | |
| deviceCode | 'JASCOAMARHYDROPHONEB000904' | 1x26 | char | | | |
| deviceCategory | 'Hydrophone' | 1x10 | char | | | |
| deviceCategoryCode | 'HYDROPHONE' | 1x10 | char | | | |
| lat | 49.0432 | 1x1 | double | 49.0432 | 49.0432 | 49.0432 |
| lon | -123.3177 | 1x1 | double | -123.3177 | -123.3177 | -123.3177 |
| depth | 166 | 1x1 | double | 166 | 166 | 166 |
| deviceHeading | 141 | 1x1 | double | 141 | 141 | 141 |
| devicePitch | NaN | 1x1 | double | NaN | NaN | NaN |
| deviceRoll | NaN | 1x1 | double | NaN | NaN | NaN |
| siteName | 'SoGEast_JascoAMARArray_ULS3_2016-10' | 1x35 | char | | | |
| locationName | 'Strait of Georgia East Node' | 1x27 | char | | | |
| stationCode | 'ECHO2.H3' | 1x8 | char | | | |
| dataQualityComments | '' | 0x0 | char | | | |
| MobilePositionSensor | 1x1 struct | 1x1 | struct | | | |
| deploymentDateFrom | 7.3661e+05 | 1x1 | double | 7.3661e+05 | 7.3661e+05 | 7.3661e+05 |
| deploymentDateTo | 7.3700e+05 | 1x1 | double | 7.3700e+05 | 7.3700e+05 | 7.3700e+05 |
| Attribution | 1x1 struct | 1x1 | struct | | | |

| Field | Value | Size | Class | Min | Max | Mean |
|-------------------|----------|------|--------|-----|-----|------|
| name | 1x1 cell | 1x1 | cell | | | |
| sensorID | NaN | 1x1 | double | NaN | NaN | NaN |
| deviceID | NaN | 1x1 | double | NaN | NaN | NaN |
| dateFrom | NaN | 1x1 | double | NaN | NaN | NaN |
| dateTo | NaN | 1x1 | double | NaN | NaN | NaN |
| typeName | 1x1 cell | 1x1 | cell | | | |
| offset | NaN | 1x1 | double | NaN | NaN | NaN |
| units | 1x1 cell | 1x1 | cell | | | |
| sensorTypeID | NaN | 1x1 | double | NaN | NaN | NaN |
| correctedSensorID | NaN | 1x1 | double | NaN | NaN | NaN |

| Field | Value | Size | Class | Min | Max | Mean |
|------------------|--------------------------|------|--------|-----|-----|------|
| acknowledgement | '' | 0x0 | char | | | |
| startDate | [] | 0x0 | double | | | |
| endDate | [] | 0x0 | double | | | |
| organizationName | 'JASCO Applied Sciences' | 1x22 | char | | | |
| organizationRole | 'Contributor' | 1x11 | char | | | |

Data: structure containing the Kongsberg rotary sonar data, tightly based on the tuple structure of SMB files. Only the important fields are listed below. For more information, refer to the SMB file specification: [900-00007904-2.1.pdf](http://www.kongsberg.com/Portals/0/Products/900-00007904-2.1.pdf). Please note that not all structures and fields available in the SMB files are converted and provided in the MAT file all of the time. If there is anything missing or something to be improved, please [contact us](#), we'll be happy to make improvements.

These structures are from the sonar ping tuple:

- overloadCounter: logical value that indicates signal saturation in the corresponding sonar ping (one for each sonar ping / profile).
- sonarData: data matrix, with the rows representing each sonar ping, columns are range. Format is uint16 or uint8, as controlled by extraHdr. BitsPerSample - '8' means 16 bit, '16' means 8 bit!
- sonarTime: array of times for each ping in matlab datetime format (days since year 0)
- sonarAngle: sonar pointing angle for each ping in degrees, copied from extraHdr.StartAngle for clarity
- sampleRate: sampling rate in Hz.

- **samplingDelay**: sampling delay or hold off (to blank transmit) in samples.
The following structures are part of the sonar ping tuple, but are only provided when the SMB source file is relatively small. These structures are slow to process, consume memory, and duplicate data that's already captured in the preceding structures.
- **hdr**: a structure representing the standard SMB tuple header (one for each sonar ping / profile):
 - **DataType**: type of data contained within this tuple, 12 is single ping data
 - **DateTime**: time at which data was collected; milliseconds since midnight UTC.
- **extraHdr**: a structure representing a common header used to provide extra information for sonar and profile data tuples (one for each sonar ping / profile):
 - **ScanDirection**: 0 = clockwise, 1 = counterclockwise
 - **StepSize**: step size of head in 0.225 degree increments
 - **StartAngle**: start angle of scan in 0.225 degree increments. This is sonar pointing angle copied to `Data.sonarAngle` below.
 - **BitsPerSample**: Number of bits in each sample
 - **SampleRate**: sampling rate in Hz.
 - **SamplingDelay**: sampling delay or hold off (to blank transmit) in samples

Here is the settings tuple:

- **settings**: a structure containing information on the sonar settings
 - **hdr**: header for the settings tuple
 - **extraHdr**: a copy of the first **extraHdr** structure
 - **config**: a structure of settings with many fields, the important ones are:
 - **Range**: range of data to display in meters
 - **SampleCount**: number of samples recorded in each ping - not accurate, use `size(Data.sonarData, 2)` to determine this
 - **Gain**: sonar gain
 - **PulseLength**: sonar transmit pulse duration in microseconds
 - **SoundSpeedDefault**: sound speed in meters per seconds
 - **ftt**: a structure representing the settings footer tuple

Here is the date tuple:

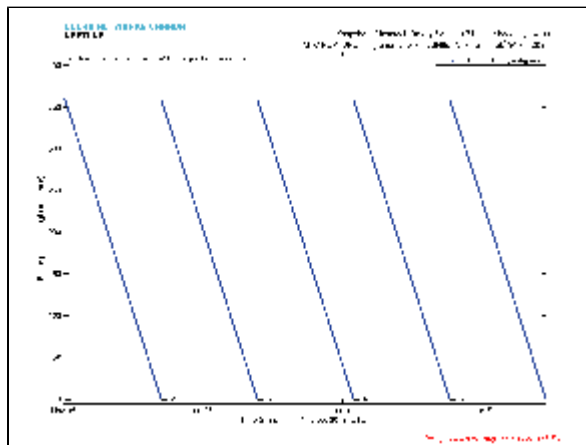
- **date**: a structure with the following date/time fields, modified from the SMB time tuple:
 - **dateFrom**: start time of source SMB files in MATLAB datenum format: days since year 0.
 - **dateTo**: end time of source SMB files in MATLAB datenum format: days since year 0.
 - **Version**:
 - **TimeUTC**: start time of source SMB file in seconds since 1970.
 - **hdr**: header for the date tuple

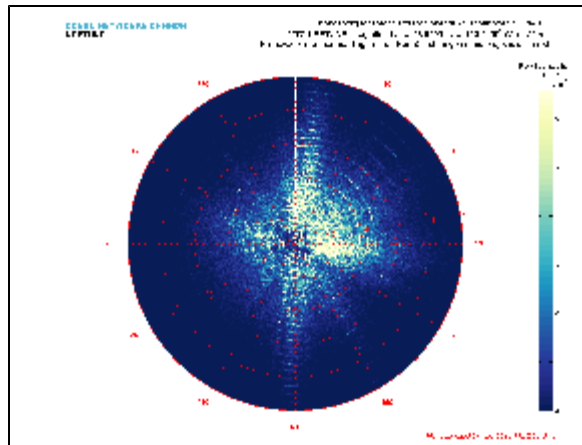
Additional tuples for heading, location maybe added in the future.

[Oceans 2.0 API filter](#): `extension=mat`

PNG / PDF

The **PNG / PDF** plot data products mirror the display of the Kongsberg MS1000 software, but break each rotation into separate plots so that no data is overwritten or has to be averaged. The raw backscatter amplitude is plotted as contained in the **MAT** file: 16 bit data ranges from 0 to 65535, 8 bit ranges from 0 to 255. The backscatter data is not calibrated. For each source **SMB** file, there are two types of plots returned: a plot of the sonar pointing / heading angle as a function of time (called 'SonarAngle') and multiple backscatter polar plots (called 'Backscatter'). The SonarAngle plot has numbered annotations showing the start of each corresponding numbered Backscatter plot. In the examples below, the SonarAngle plot shows that five Backscatter plots will be created for this **SMB** source file. The **PDF** version of this data product will group this plots into a single **PDF** file with multiple pages. Please note that these examples are of test tank data; real data looks much better.



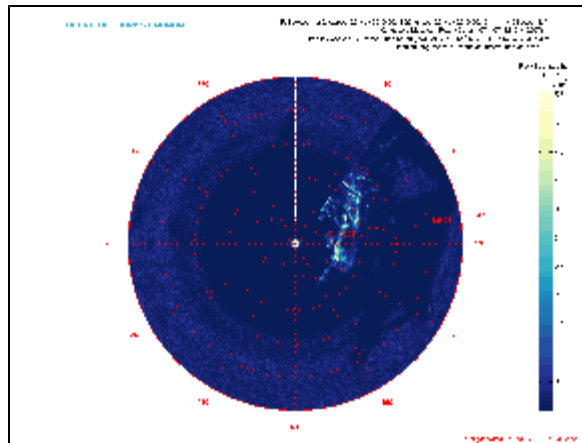


The algorithms for detecting each rotation and for making the plots are somewhat complex. [Contact us](#) if you are interested in the source code for these plots, which would be useful for analyzing the data from the **MAT** files.

[Oceans 2.0 API filter](#): extension={png,pdf}

GIF

The **GIF** is an animation of the **PNG** plots seen above excluding the sonar pointing / heading angle as a function of time plot. The **GIF** plots are broken up daily so they run through every **PNG** in a day.



[Oceans 2.0 API filter](#): extension=gif

Discussion

To comment on this product, click [Add Comment](#) below.