

# 10

## RDI ADCP Daily Intensity Plot

A specialized colour image plot to view daily relative backscatter intensity of the RDI ADCPs is available. There are plots for each of the four beams. If the user has only requested a subset of the day, only that subset will be plotted. Basic metadata information is also included. Data gaps are indicated by black regions. The values plotted are the Receive Signal Strength Intensity (RSSI) which is the `adcp.intens` matrix as described on [RDI Time Series data product documentation](#). These values are not calibrated or compensated for spreading and attenuation losses; for those values look up the `adcp.backscatter` and `adcp.meanBackscatter` matrices in the MAT file RDI Time Series data product.

Oceans 2.0 API filter: `dataProductCode=RDIP`

### Revision History

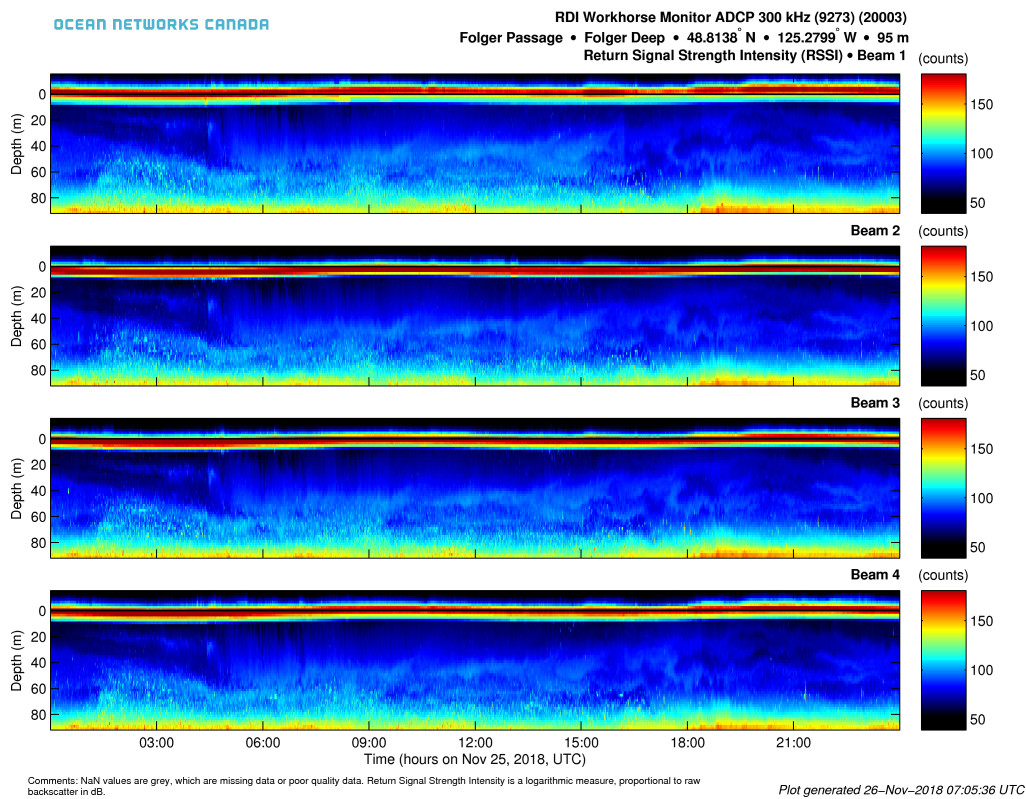
- 20100217: Data product initially released

### Formats

Plots are available in **PNG** and **PDF** formats.

Oceans 2.0 API filter: `extension={png,pdf}`

### PNG Example:



## Discussion

To comment on this product, click [Write Comment](#) below.