



Vessel: SOVI

Date: August 10, 2016

Arrival: Walked on via passenger terminal using travel vouchers.

Reporter: Rowan Fox

Staff: Ian Giraudy, Rowan Fox

Reason for Visit

Service instruments in instrument housing, inspect system for overall health.

Observations

1. Salt in the bottom of the plumbing box and in the leak tray. – the pump is likely leaking saltwater, and is creating a miniature water cycle inside the plumbing box. Evaporation, condensation, salt crystals in the leak tray. Leak detect was not tripped.
On the next trip, recommended to replace the pump.

Actions Taken

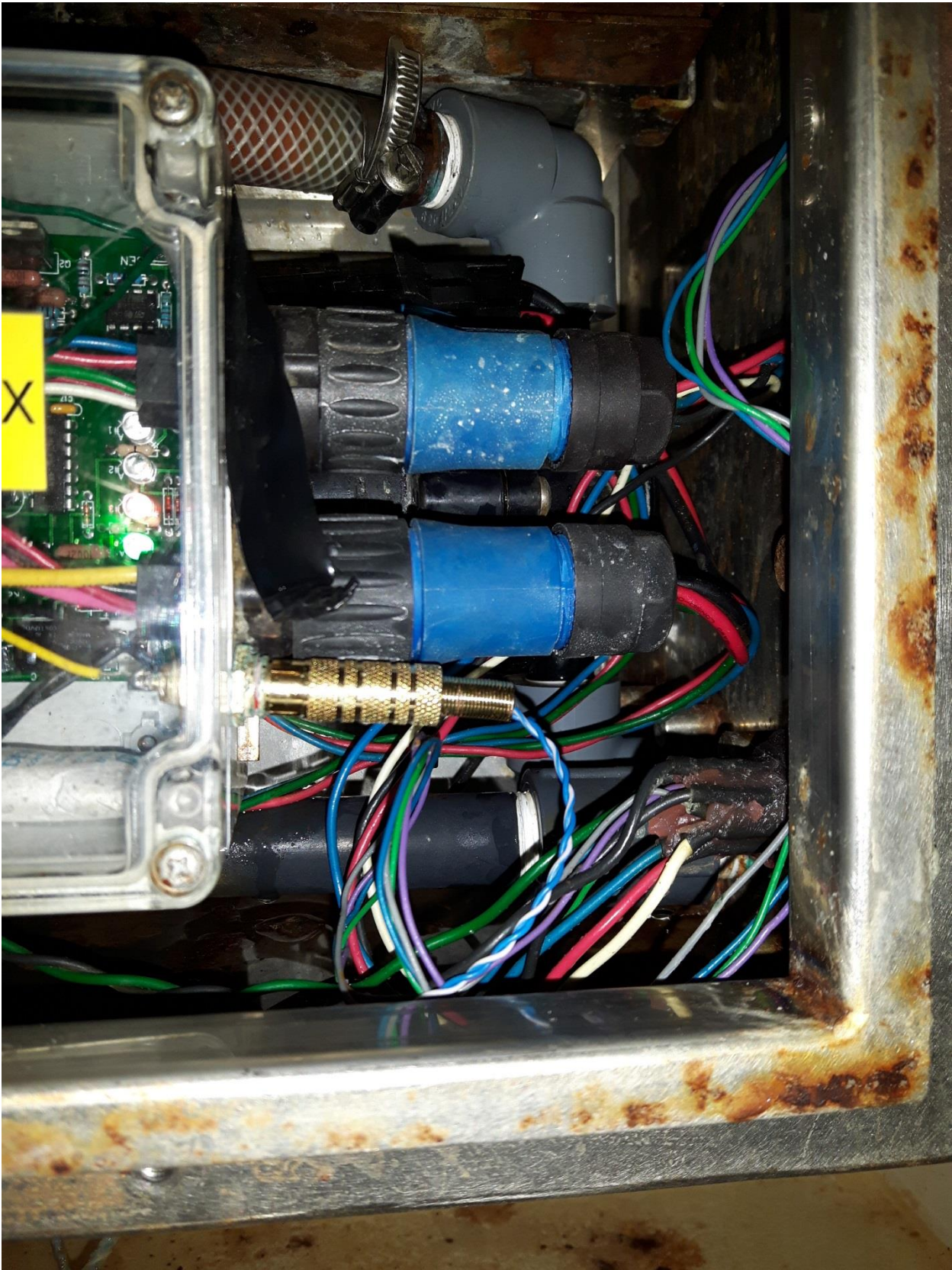
1. Signed in with Ship's Engineering.
2. Opened PC housing, verify operation. Shut down computer, and power system OFF.
3. Turned off Intake valve.
4. Opened Instrument housing. Remove damp desiccant bags.
5. Removed instruments – BBFL2, SBE, and AADI.
6. Cleaned sea strainer filter.
7. Replaced tubing.
8. Serviced and cleaned SBE Thermosalinograph.
9. Conducted benchmark tests on Wetlabs BBFL2, and AADI O2 sensors. Files are uploaded to Alfresco.
Note: BBFL2 responded as expected to DC & SZ after cleaning, optode read ~115% for saturation measurement, and 0% for oxygen depleted measurement.
10. Reinstalled instruments in instrument housing
11. Turned ON intake valve
12. Powered ON PC / electronics
13. Ensured system flow, no leaks were present besides very slow leak on the pump.
14. Placed new desiccant bags within housing and closed it up.
15. Signed out from ships Engineering room

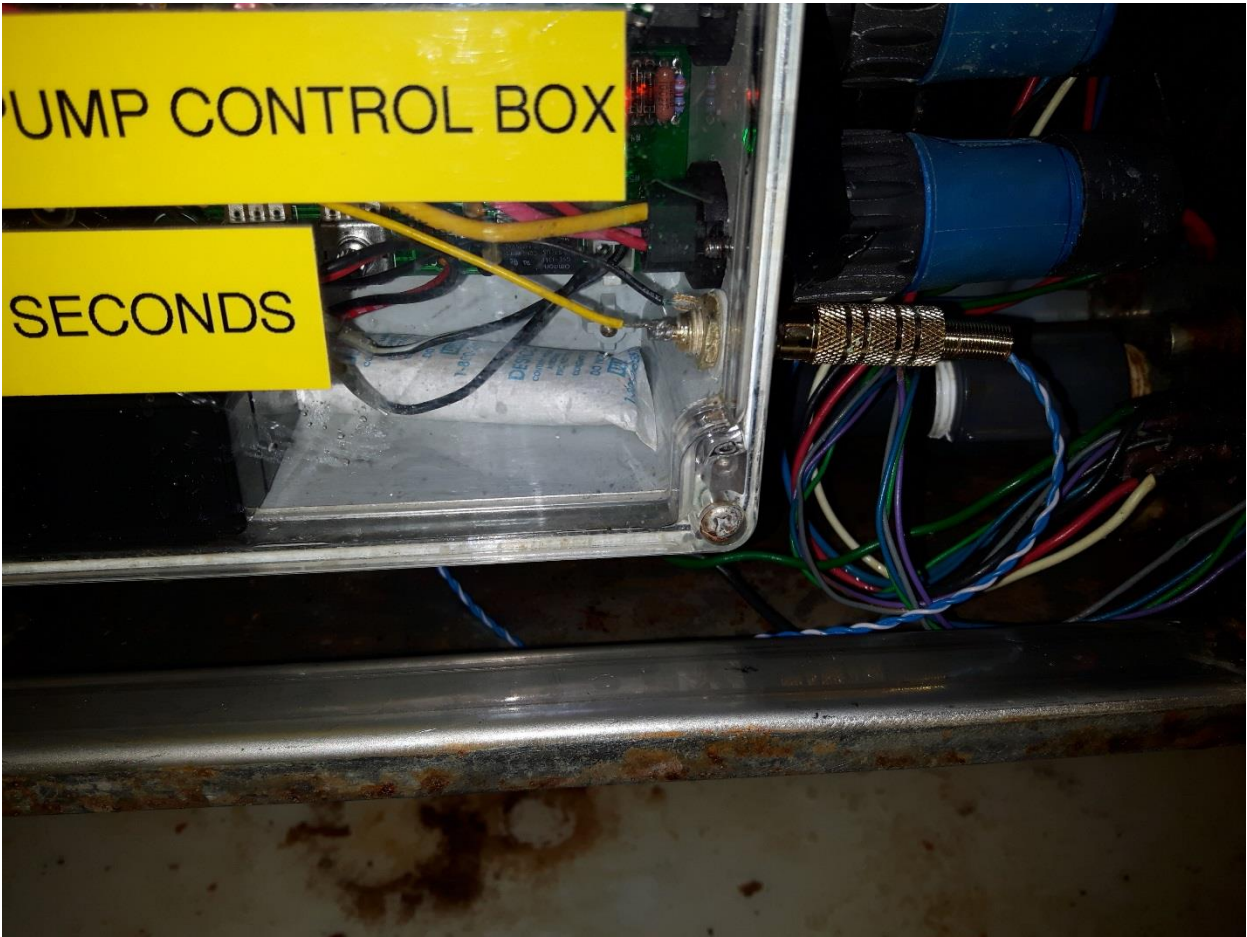
Future Actions

1. Request to leave tool box with parts on ship

2. Replace pump





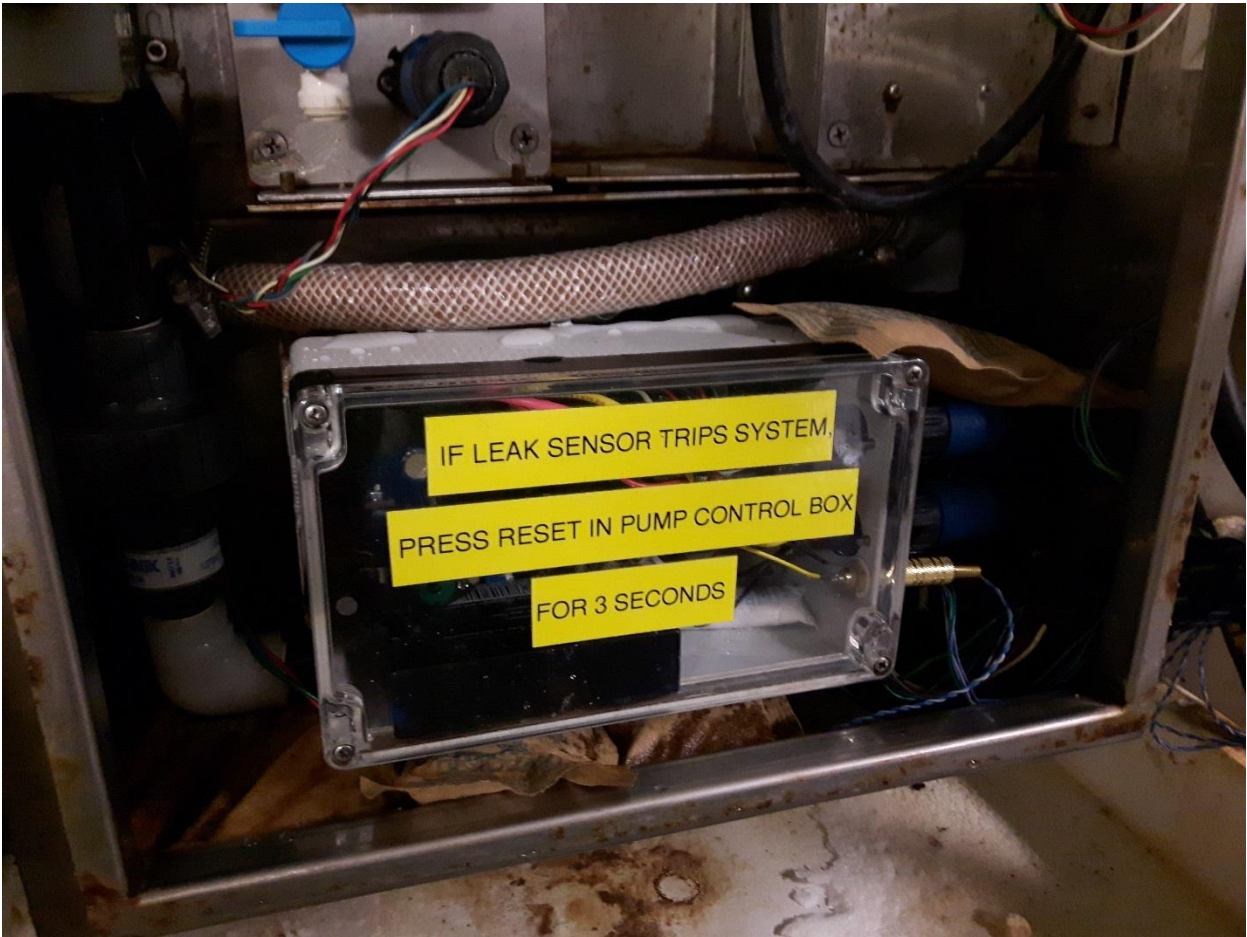


Ocean Networks Canada
Ferry Maintenance Report – SOVI





Ocean Networks Canada
Ferry Maintenance Report – SOVI



Ocean Networks Canada
Ferry Maintenance Report – SOVI







Ocean Networks Canada
Ferry Maintenance Report – SOVI







Ocean Networks Canada
Ferry Maintenance Report – SOVI

