



LUCY

Visualize your acoustic data

Lucy is a PC program that lets you view and interact with data collected by icListen Smart Hydrophones. Lucy displays real-time waterfall and time-series data. Lucy's waterfall display lets you make accurate measurements from recorded or live data.

Use Lucy with the icListen broadband Smart Hydrophone to make sound decisions.

Applications

- Environmental Monitoring
- Ocean Observatory
- Offshore Energy Operations
- Sea Mammal Monitoring
- Ocean Noise Measurement
- Pipeline Leak Detection

Measure real-time events with confidence

Replay recorded data to learn even more about collected sounds.

Connects to all of our Smart Hydrophone products and reconfigures the display to match the instrument's features.

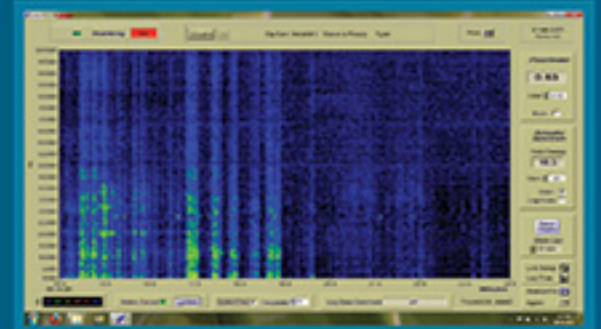
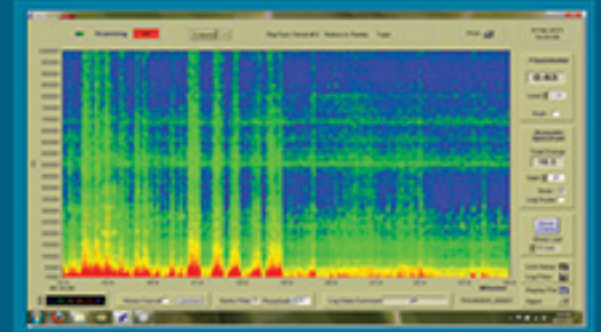
Hear it. If the WAV file is in the audio band, replay the acquired sounds through the PC speakers.

Review WAV files collected from our Smart Hydrophones,

Field Proven and designed to be used in the field by busy operators. Displays are optimized for reading with minimal user input.

Noise cancellation removes background noise from the display, showing acoustic events more clearly.

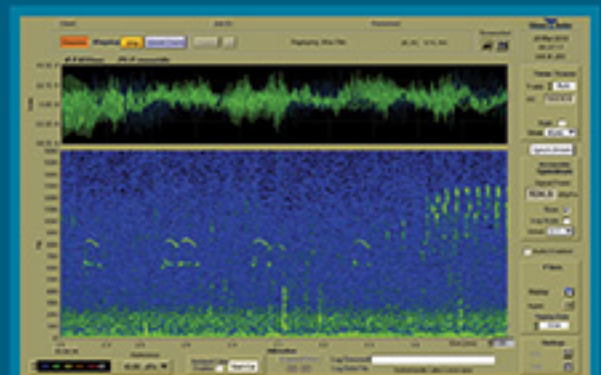
These screen shots show how Lucy displays an egress leak with water escaping an ocean-bottom pipeline. (top: unfiltered; bottom; filtered)



Porpoise clicks in the Bay of Fundy



Various Loon calls in Sutherlands Lake, Nova Scotia.





PC Software for Smart Hydrophones

Modes of Operation

1. Real Time

- Visualize acoustic data as it is collected
- Display waterfall, time series or FFT data
- Store unmodified calibrated data

2. Noise Cancellation

- See through the noise by modeling it, then remove the noise from the display
- Original data remains unchanged whether or not filtering is enabled

3. Replay Mode

- Visualize previously collected acoustic data
- Display FFT, waterfall and waveform data
- Use Lucy's Epoch feature to detect events
- Let Lucy run unattended when processing multiple files.

icListen LF & HF
24-bit Smart Hydrophone
1.0 - 1600 Hz / 10 Hz - 200 kHz

Options
Depth 200m / 3500m
Interface: Ethernet/Serial

System Requirements
Windows XP or Windows 7



Hill House
11 Lornevale Road, Great Village
Nova Scotia, Canada B0M 1L0
+ 1 902 655 3000

Ship events in English Bay, Vancouver, British Columbia

