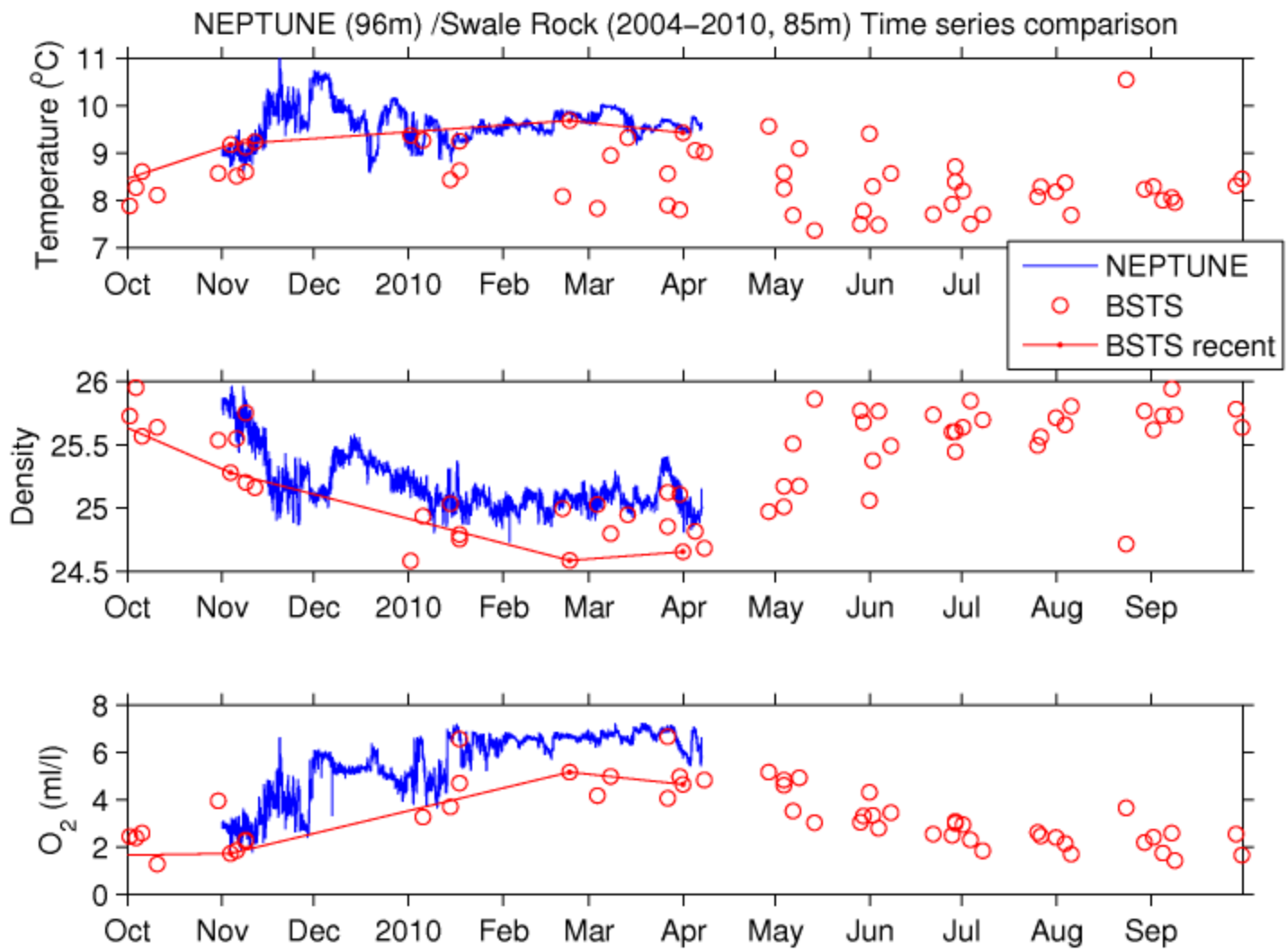


Folger Deep Node – Some Pictures and a Status Report

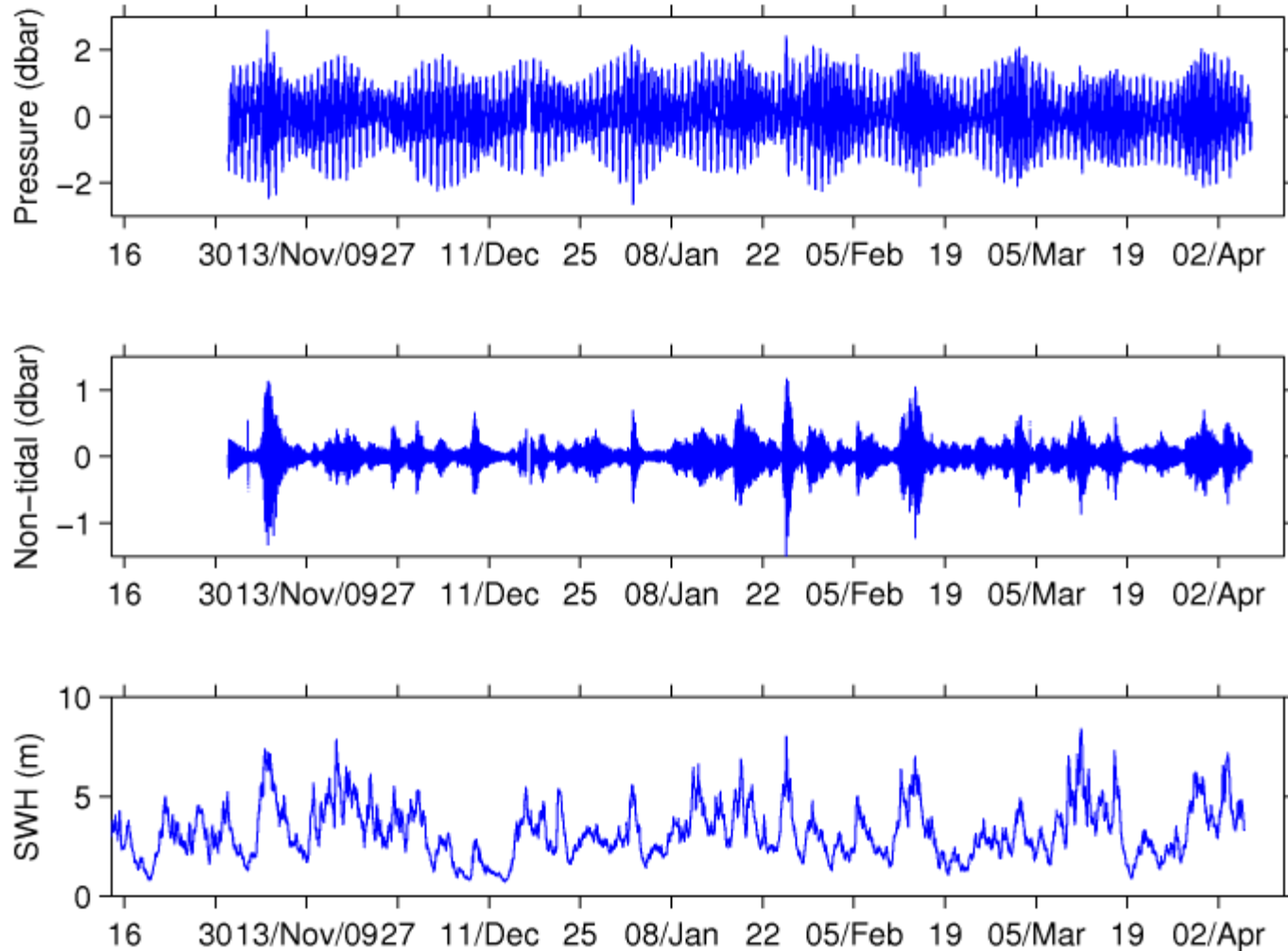
Rich Pawlowicz

Dept. of Earth and Ocean Sciences,
University of British Columbia

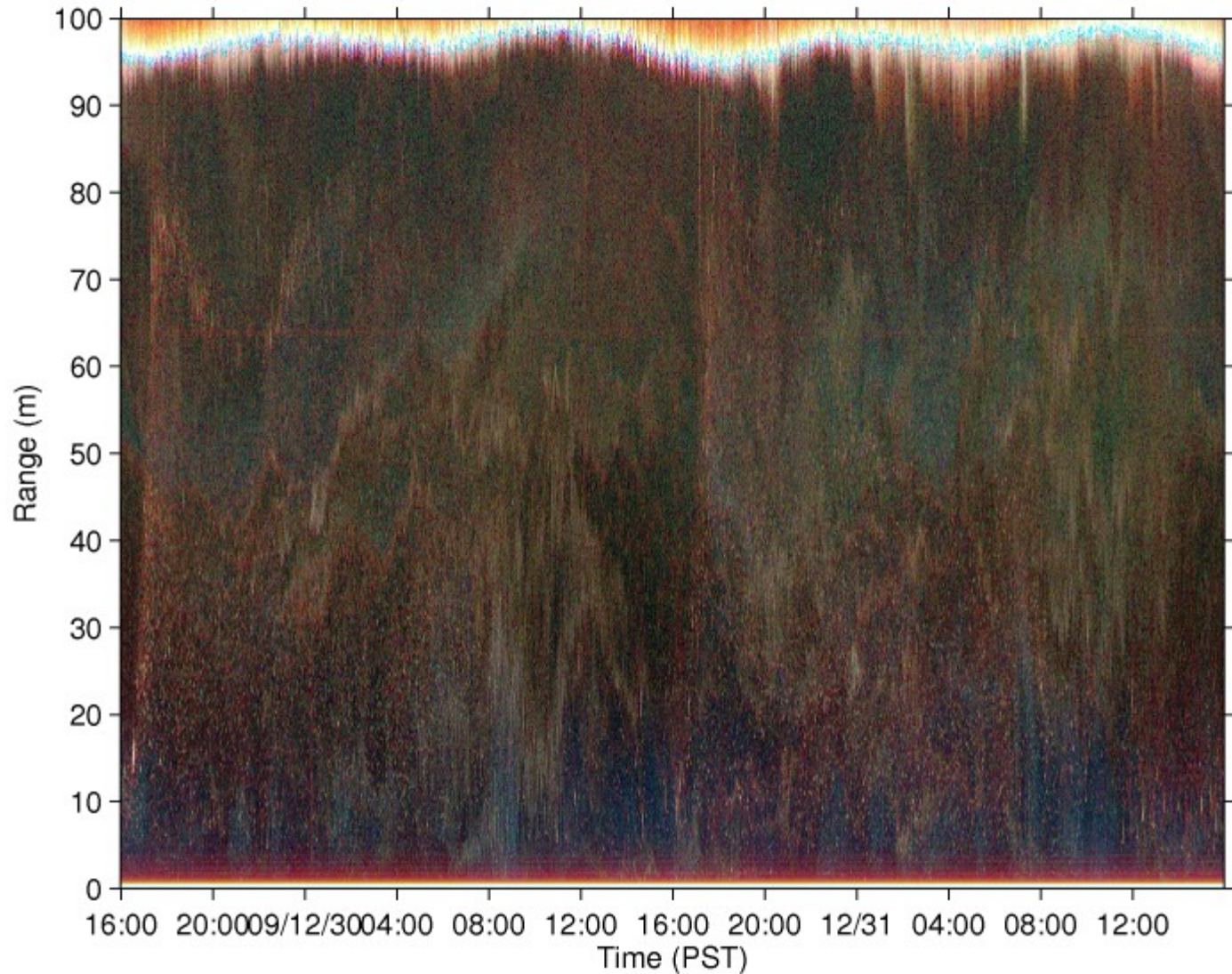
NEPTUNE Seacat/Optode versus BSTS CTD



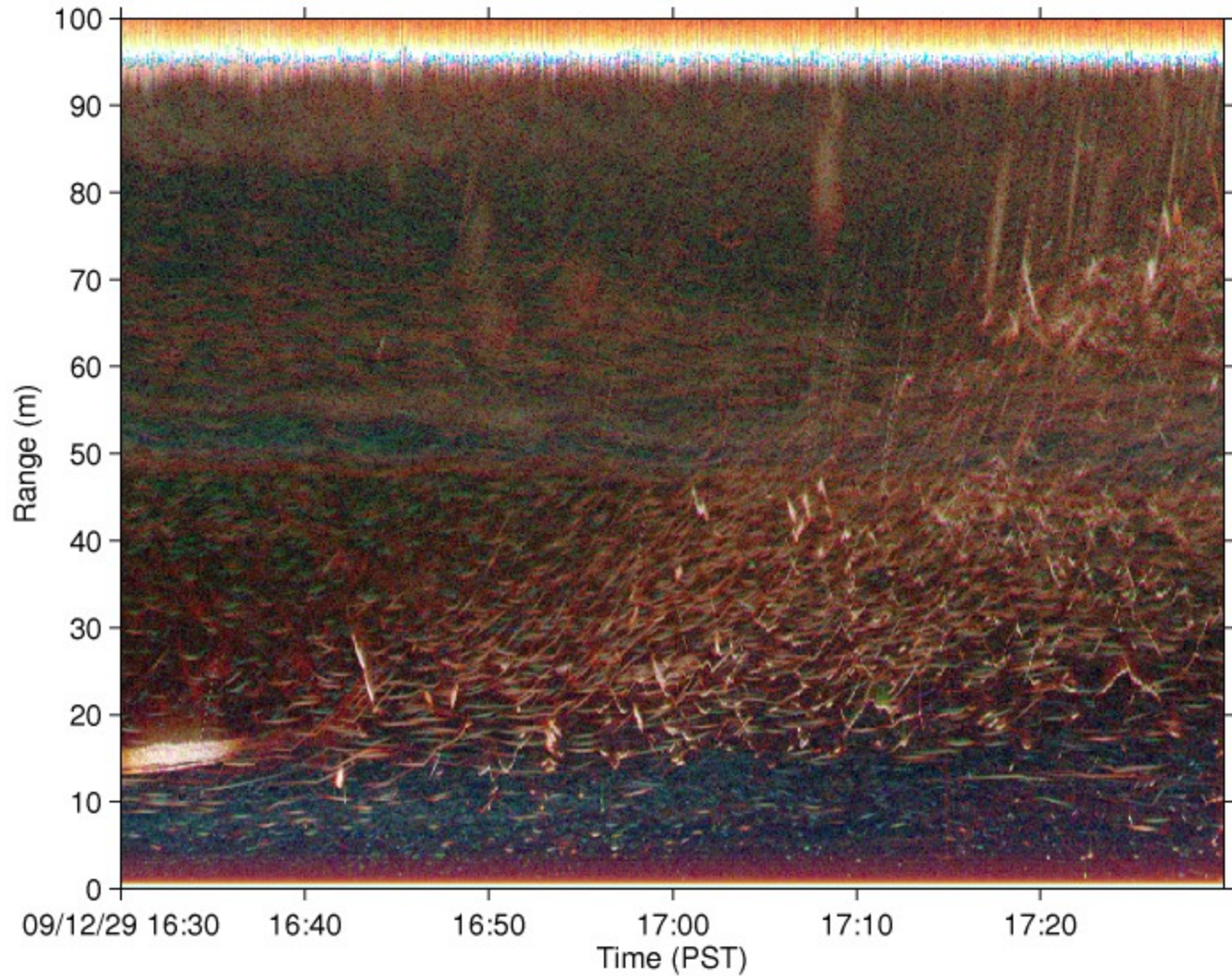
Surface wave effects at 96m



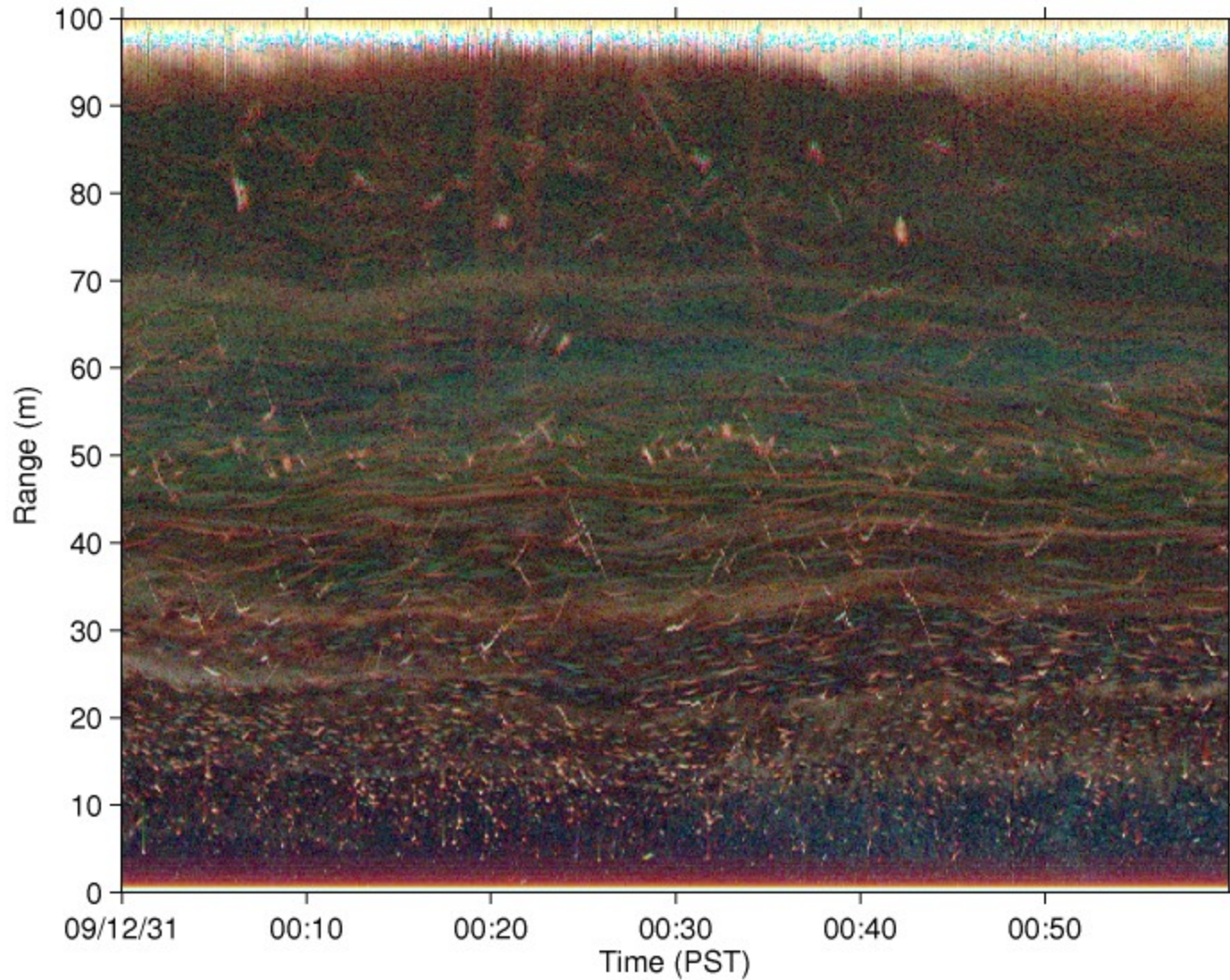
Biosonics 3-freq sounder – 2 days



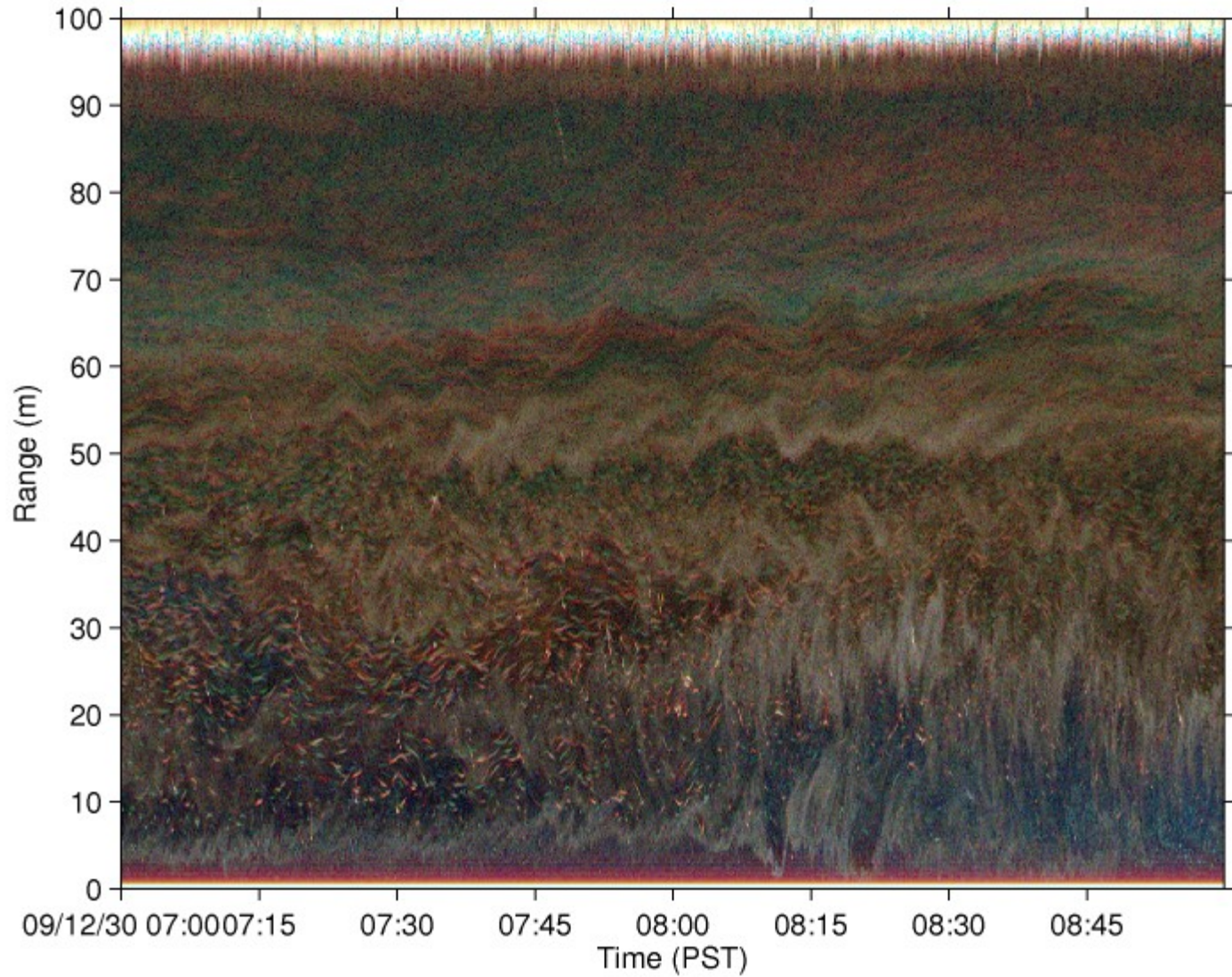
Dusk (1 hour)



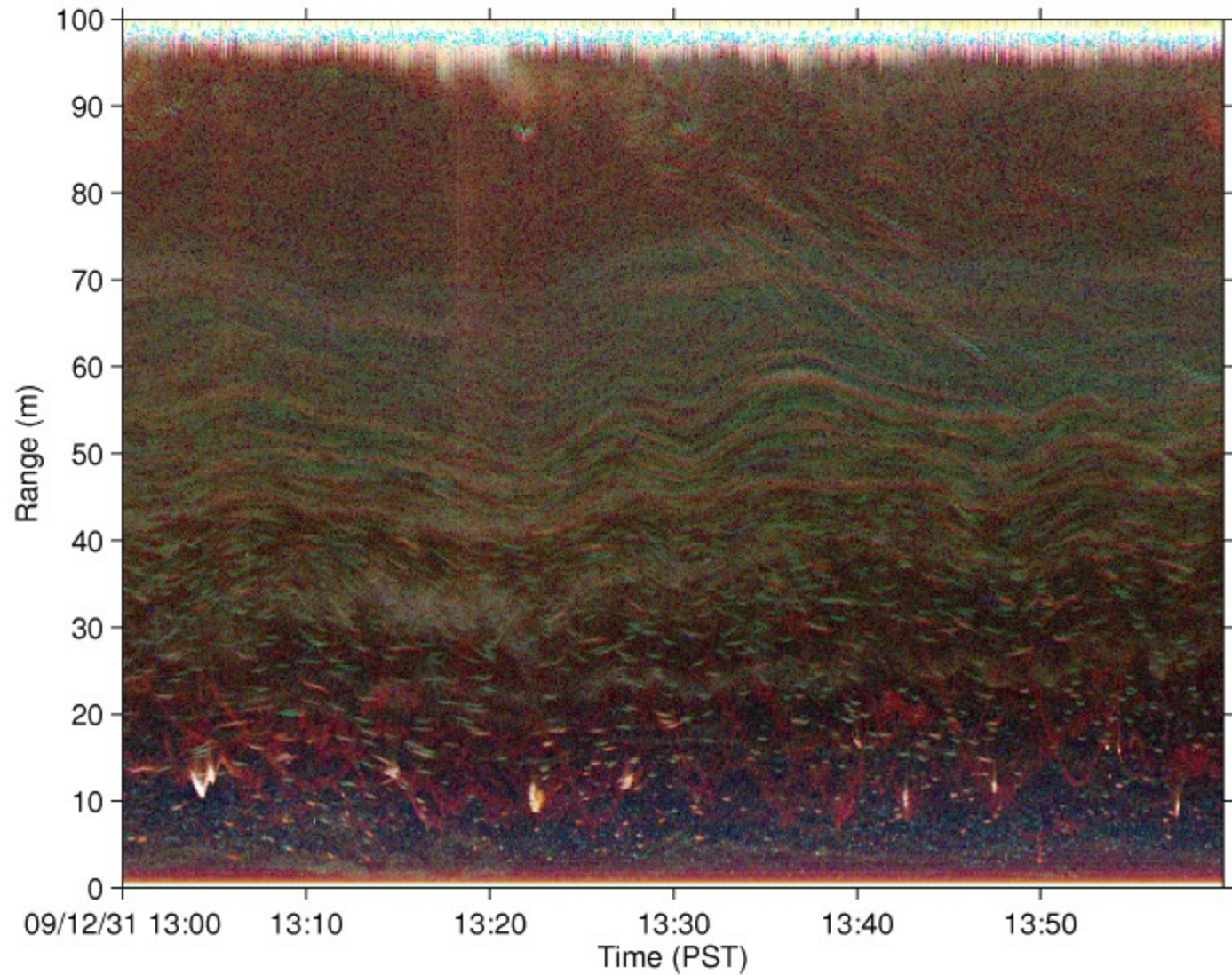
Midnight (1 hour)



Dawn (1 hour)



Noon (1 hour)



Instrument Issues handled

- QC on optode, Seacat
 - Sampling times OK (30 secs, 1 min)
 - Timing interval jumps on Seacat?
- QC on ADCP
 - 1 Hz pings, 15 sec ensembles
- QC on Biosonics
 - 1 Hz ping (all 3 freqs)
 - Sampling clocks not synched, can't 'overlay' frequencies – IN PROGRESS
- Acoustic Scheduling/Interference Reduction
 - Biosonics/ADCP interleave - DONE
 - Passive/Active scheduling – IN PROGRESS

Data access issues

- DMAS interface works nicely (but not working some times)
 - Wish it would show download file size
 - Time setting window a bit clunky
 - Not obvious how to report problems (needs a button or an address)
 - Sometimes is 'processing request' for long periods, possibly something has gone wrong?
 - Have used matlab output exclusively, combining results from different searches a bit difficult.
 - Biosonics N/A this way

Science Plans...

- Original plans (to study bio/physical coupling) required near-surface info. Different plans are required for current package...I can think of them but not sure how vigorously I can pursue them.
- Continue my CTD time series (will happen anyway)
 - With NEPTUNE ADCP to monitor renewals
- Underwater acoustics
 - Count 'fish', different size classes?
 - Figure out what 'fish' really are?
 - Try to monitor zooplankton biomass?
 - Compare with Tanasichuk time series
 - Behavior?